



# 2022-2023 Educational Webinar Series

## Staffing Models and Justification to Management

March 09, 2023

### Panelists

**Nader Hammoud, MBA, CHTM**  
Manager, Clinical Engineering  
John Muir Health

**Angela Bennett, CHTM, BS**  
Sr. Site Manager, Clinical Engineering  
TRIMEDX

**Roberto Torres, Jr., MBA**  
Director, Clinical Engineering  
Stanford Children's Health

# About the Moderator



**Mike Powers, MBA, AAMIF, CHTM, CDP**



Mike Powers is the System Director for Field Service in the Healthcare Management Department at Intermountain Healthcare, headquartered in Salt Lake City, Utah.

He co-leads a task group for Health Sector Coordinating Council on Legacy Medical Device Cybersecurity. He is a vice chair of the AAMI Healthcare Technology Leadership Committee.

Prior to Intermountain, he was the Clinical Engineering Quality Manager at ChistianaCare Health System. He has an MBA in Healthcare Administration from Wilmington University and is a Certified Diversity Professional.

ACCE gratefully acknowledges the sponsorship of the  
2022-2023 Educational Webinar series by



HEALTHCARE TECHNOLOGY SOLUTIONS  
ENHANCING THE CLINICAL EXPERIENCE



# Logistics

- ❖ All attendees have their microphones muted during the presentation.
- ❖ Questions to the panelists must be submitted via the “Q&A” feature in Zoom at any time. They will be addressed at the Q&A portion.
- ❖ If there is any urgent issue, please use the “chat” feature to communicate with the host/moderator.
- ❖ Please remember to complete the webinar evaluation after attending. A link will be provided at the end.

# About the Speaker



**Nader Hammoud, BE, MBA, CHTM**



**Nader Hammoud is currently the Biomedical Engineering Manager, at John Muir Health.**

- Biomedical Engineer with 3 degrees in Biomedical Engineering and an MBA
- International Experience
- Active member of the HTM community
- Member of the Technology Management Council at AAMI
- California HTM of the year for 2018
- Recognized by ECRI and FDA for efforts in the domain

# About the speaker



Angela Bennett, CHTM, BS



**Angela is currently a Sr. Site Manager with Trimedx for FMOL Our Lady of the Lake Baton Rouge market.**

- Bachelors of Science in Biomedical Electronics
- Certified Healthcare Technology Management acquired in May 2022.
- AAMI HTLC under 35 Committee member
- ACCE Education committee Member
- AAMI Young Professional Award Recipient
- TechNation 40 Under 40
- United States Army Veteran-68A BMET
- Published articles in HTM magazines as well as a few outside of HTM
- HTM on the line guest speaker
- Guest Speaker at AAMI Exchange with ACCE: The 3 R's
- Previous President of the West Michigan Biomed Society.

# About the speaker



**Roberto Torres, Jr. MBA**



**Roberto is currently the Director of the Clinical Technology and Biomedical Engineering Department at Stanford Medicine Children's Health.**

- B.S. Biomedical/Electrical Engineering with an MBA
- 31 years in industry
- Active member of the HTM community
- Past board member of LA Chapter CMIA
- Past speaker at AAMI, HIMSS, ACCE and Epic UGM events
- Past contributor to Tech Nation articles

# Session Topics

- Staffing models for HTM field
- Different HTM role job descriptions
- How to get new positions approved through management using quick tips for justification.





# Staffing Models

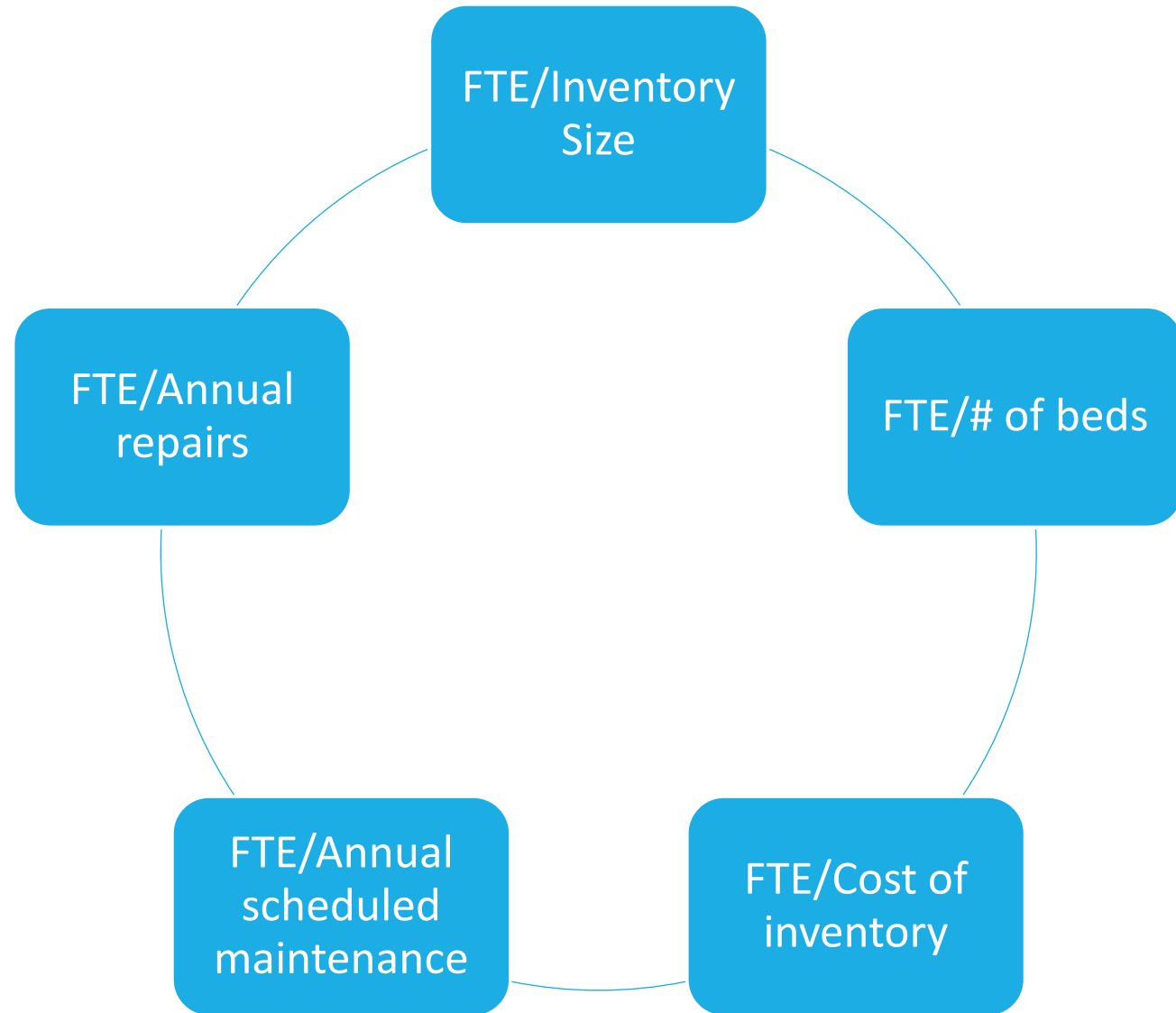
---

The age-old question:

- How many resources do I need to run my HTM program successfully and efficiently?

# Staffing Models

Here are just a few traditional models that have been used over the years. There are others but these tend to be the most popular.



# Staffing Models

These staffing models may fall under several categories:

- Operational
- Financial
- Productivity



The staffing model is important because it can help you not only justify the number of resources you are requesting but show the value of the services being provided.

# Staffing Models

Whichever staffing model you choose you must be prepared to present your request to hospital leadership and be able to defend your request not just initially but to adjust as the hospital evolves, grows and become more technologically intense.

You will be required to present justifications each time you request an additional resource in the years to follow.

Your presentation may include things like trending information over the past few years. Here is a sample slide that can show value improvement over the years.

# Clinical Technology and Biomedical Engineering Value Improvement

## FY17

## FY18

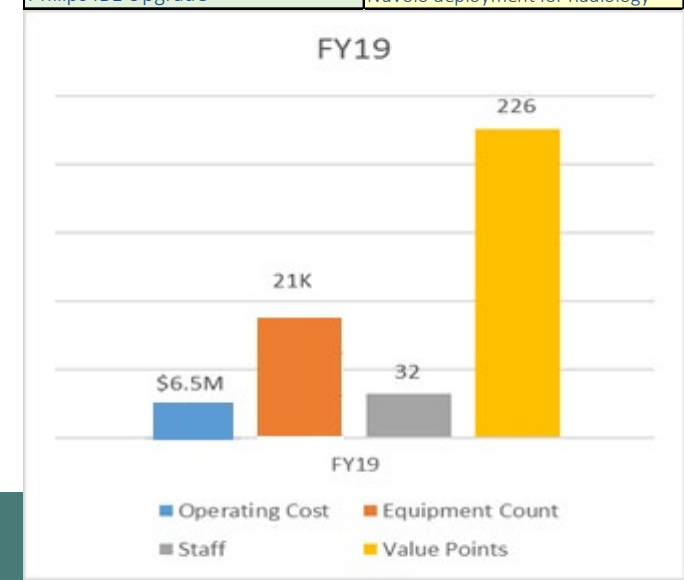
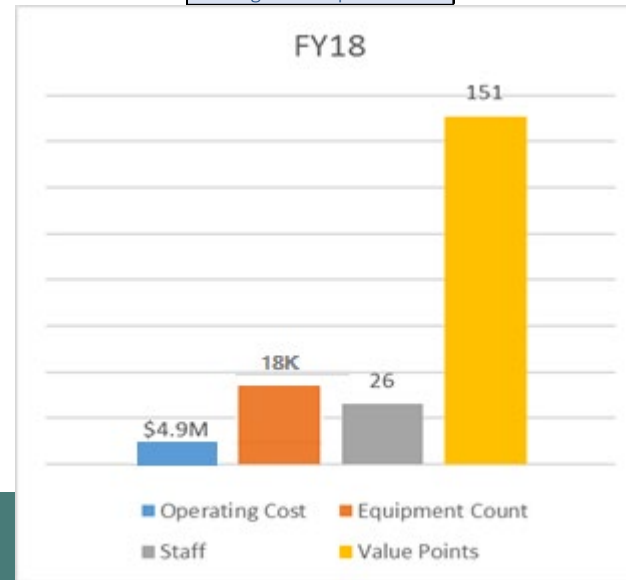
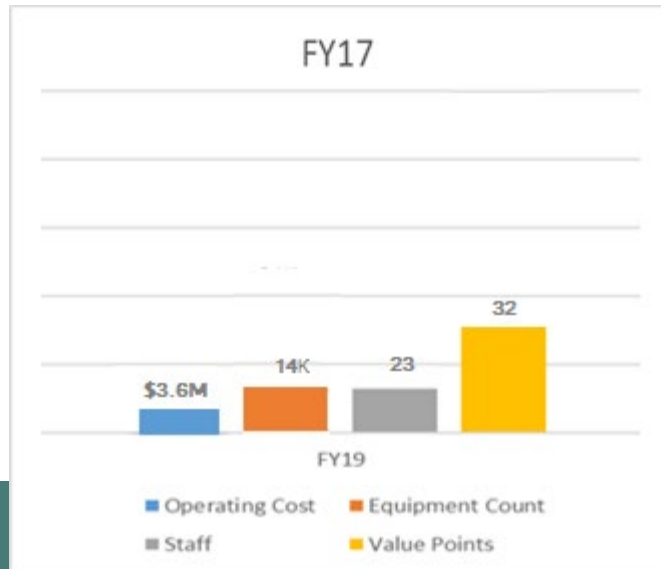
## FY19

Value	Value Points
New System with New Functionality	10
New System with Existing Functionality	5
Existing System with New Functionality	7
Major Enhancements	2

SSID Consolidation project
Smiths Medical Security
Philips WMTS Layer 3
West Bldg ISE Conversion
Patch planning impl.
Zoll Rescue Net
Citrix Migration /Med. Dev.
St. Jude – Deployment/Video
Intellispace Perinatal
Philips Data warehouse
Merge – Deployment/Video
Carto – Deployment/video
Masimo Rainbow
West Bldg DNS_DHCP
Synaptive ImageDrive
Main Bldg & OR Opening
Stryker OR Integration
MGC Diagnostics BreezeSuite
Brainlab Deployment
Neuwave ablation
Z-Scores for Cardiology
SpaceLabs Sentinel
Altos Oaks opening
CTBE Refresh for 2018
Moberg Citrix Impl.

Ventilator Integration
Telesurgery /Stryker
Laborie Solar GI
CMDDB Project
Server Migration to PSR
West Bldg PACU_OSC
F2 292 Maternity – ISP Exp.
Synaptive/Solais tissue analyzer
PCU350 Maternity
Nuvolo CMMS Deployment
Med. Device Risk with SOM
PCU360 Acute Care Opening
NICU 260 Deployment and Opening
EEG Research Impl.
Cadwell EEG (integration with SHC)
PCU380 Acute Care
Alarm Mitigation / VIP
Philips FocusPoint
Philips IBE Upgrade
Servers 2008 Upgrades
Zoll Defib dashboard 2.0
Switch IOS Upgrade
RTLS Integration to Nuvolo
Quarterly Security Patching
Perfusion Integration Depl.
Packard 2.5
Nonin NIRS integration
Natus EMG/EEG Implementation
West Building Refresh
Maternity 374
DR Planning
Capital Refresh
Braincare Deployment
BD CareFusion Alaris Upgrade
West GI
Sunnyvale Power
CPMC Move
Town and Country move
Marin Clinic move
Firewall change
Upgrade El Camino Telemetry
Nuvolo deployment for Radiology

Philips iECG Deployment
Philips PIIcX Deployment
CTBE Refresh for 2017
Medical Devices on IS Network

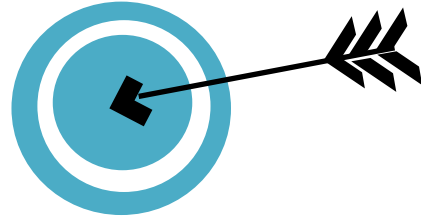


## QUICK LOOK

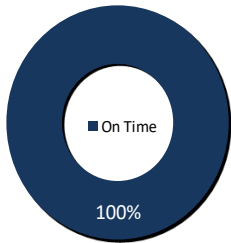
**1,300** Total monthly work orders

## EFFICIENCY

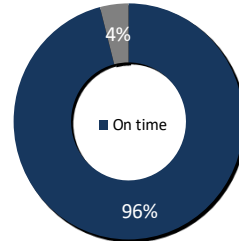
All incidents addressed within 15 minutes of call received



## PREVENTIVE MAINTENANCE (PM) COMPLETION



100% on-time high risk PM completion

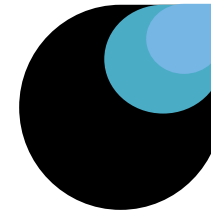


96% on-time non-high risk PM completion



Lucile Packard Children's Hospital  
**Stanford**

## WORK ORDER DETAIL



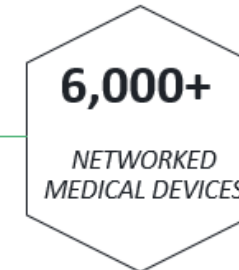
**300** monthly incidents  
**800** preventive maintenance work orders  
**200** monthly repairs, projects, etc.

## REGULATORY

**100%**  
Regulated Environment

THE JOINT COMMISSION  
FDA  
CENTERS FOR MEDICARE AND MEDICAID (CMS)

## DEVICE INVENTORY





# Staffing Models

Some of the older staffing models especially under the operational or productivity category were easier to implement before when equipment was not as intense to support.

e.g. FTE/Inventory size – this staffing model has varied over time. Variations anywhere from 700 devices per FTE to more aggressive counts of about 1300 devices per FTE.

Or FTE/annual repairs – add up the total # of hours for the year and determine how many hours per FTE needed.

Considerations in this model is to keep in mind the complexity of the devices being supported.

# Staffing Models

As devices have evolved (become smarter) and require different skills to support the traditional staffing models may not be the best approach.

Today, our teams support not just hardware but the back-end of those devices that produce data (network, application, servers, etc.).

The skillsets of the team has also become more complex.





# Staffing Models



Some points to consider:

- Lower risk devices may not require as many hours for annual services but may require higher number hours for ongoing repairs.
- Higher end/higher risk devices may require much more time for annual services but not at many service repair events.

You will need to be very familiar with the mix of medical devices in your inventory to have not just the correct number of staff but the correct expertise to support your HTM program.

# Staffing Models

Other considerations.



Your staffing model should account for:

- Devices supported under service agreements. You'll need resources to manage those service visits by the vendor.
- Time needed to support vital function of your department:
  - Ordering parts
  - Managing your CMMS
  - Looking for missing equipment
  - Ongoing cleaning exercises
  - Adverse event investigations
  - Upgrades/recalls

# Staffing Models

Your presentation to leadership should also include implications of not hiring the resources requested.

e.g.

- Services to clinical areas may not meet the demand
- Potential of falling short of TJC expectations of completing Preventive Maintenance on time.
- Customer service may be impacted

Along with these implications there should also be an alternate solution if the FTE is not approved.

e.g.

- The requested support will be completed by hiring contracted help which can be costly.
- OT may be required to meet the demands which can also increase costs.

# Staffing Models

You may showcase several areas to highlight the reason for the requested resources.

Justifications may include:

- Cost reduction/ROI
- New services/New technology
- Inventory Growth
- Business continuity/growth
- Technology expansion
- Expansion of hours of coverage



# New Staffing Models

- Staffing Models have evolved over the years for HTM
- You might think that the higher role of HTM professional, the more equipment they can take on. Although the ability to take on more might be true based on tech experience and knowledge, the availability of the techs time would prove otherwise based on the equipment they service or specialize in.
- Now the higher the specialty the fewer devices they should be assigned. The general to no specialty techs have the larger quantity of general equipment.
- Its hard to put a number or limit on staffing models because every tech will be different and every team will have different needs.

# Examples of New Staffing Model

- Specialties such as Ventilators, patient monitoring\*, High End/Life Support Devices in the OR, Lab, Imaging, etc. require more time and focus for service. Therefore should have fewer devices assigned to them.
- General Biomedics are assigned to vast majority of non specialty devices such as beds, clinic devices, IV pumps, non PM'able devices, etc.

\* Patient monitoring is labeled as a specialty because in healthcare today, its more than just the bedside monitors, it's the system as a whole to include networking, cabling, servers (virtual and physical), switches, Telemetry, Access Points, etc. It could take an entire day to track down why patient data is not flowing from the patient to the EMR.

# Work Load Balance and Staffing

- Taking into consideration the different modalities, the techs experience, techs knowledge base, and need of the hospital will help determine staffing models for your shop.
- Staffing models will vary from shop to shop.
- Work load balances look different these days because its more about type of work than just the number of devices spread out amongst each tech.
- **DISCLAIMER:** just because the tech is a higher level tech, does not mean they cannot be used where needed if they have the time. Flex them where you need them within reason. **TEAMWORK!!!** Team work and comradery should be a goal for your whole team.
- This also will help you plan out your job descriptions to fit the needs of your team and shop.

# Job Descriptions and Requirements

Give basic differences between a BMET 1 through BMET 3, supervisors, managers, Imaging 1-3, Lab 1-3. Other descriptions.  
Mobile medical tech, road tech, field services.  
Inhouse versus third party versus OEM



# BMET I- Example

## Skills and Experience

- Complex computer skills including the ability to interpret error codes, defragment hard-drives, replace power supplies, and interpret computer codes required
- Ability to integrate information from a variety of sources
- Excellent interpersonal and customer service skills
- Strong written and verbal communication skills

## Education and Qualifications

- Associates degree in a technical/electronics field or equivalent military experience or two years of equivalent experience.
- 3 months experience working with biomedical equipment in a clinical engineering environment preferred
- Valid driver's license required; variable travel requirements depending on primary site that may require use of personal vehicle

# BMET II- Example

## Skills and Experience

- Complex computer skills including the ability to administrate a system, interpret error codes, defragment hard-drives, replace power supplies, and interpret computer codes required
- Ability to integrate information from a variety of sources
- Excellent interpersonal and customer service skills
- Strong written, verbal, and presentational communication skills

## Education and Qualifications

- Associates degree in a technical/electronics field or equivalent military experience or two years of equivalent experience
- Technical Certification (CBET) strongly preferred
- Minimum 3 years' experience working with biomedical equipment in a clinical engineering environment
- Valid driver's license required; variable travel requirements depending on primary site that may require use of personal vehicle

# BMET III- Example

- **Skills and Experience**
- Complex computer skills required, including the ability to administrate a system, interpret error codes, defragment hard-drives, replace power supplies, interpret computer codes, and apply networking concepts
- Ability to integrate information from a variety of sources
- Excellent interpersonal and customer service skills
- Strong written, verbal, and presentational communication skills
- **Education and Qualifications**
- Associates degree in a technical/electronics field or equivalent military experience or two years of equivalent experience
- Bachelor's degree in engineering technology preferred
- Technical Certification (CBET) preferred
- Minimum 5 years' experience working with biomedical equipment in a clinical engineering environment
- Valid driver's license required; variable travel requirements depending on primary site that may require use of personal vehicle

# Sr. BMET- Example

- **Skills and Experience**
- Complex computer skills required, including the ability to administrate a system, interpret error codes, defragment hard-drives, replace power supplies, interpret computer codes and apply networking concepts.
- Advanced knowledge of Microsoft Office applications required.
- Ability to integrate information from a variety of sources.
- Ability to lead, mentor, and influence clinical engineering staff.
- Excellent interpersonal and customer service skills.
- Strong written, verbal and presentation communication skills. Possess strong leadership, organizational, and time management skills in effort to make effective decisions.
- **Education and Qualifications**
- Associates degree in a technical/electronics field or equivalent military experience or two year of equivalent experience.
- Technical Certification such as A+, CBET, CRES or CLES preferred.
- Minimum 5 years' experience working with biomedical equipment in a clinical engineering environment.
- Must have CE experience and knowledge and an ability to influence others.

# Supervisor- Example

- **Skills and Experience**
- Minimum 5 years' experience working with biomedical equipment in a clinical engineering environment, with at least 3 years' experience leading/managing in a clinical engineering environment preferred-Advanced knowledge of Microsoft Office applications required
- Ability to manage day-to-day and long-term site operations
- Possess strong leadership, organizational, and time management skills in effort to make effective decisions
- Ability to lead, motivate, and develop others
- Ability to perform basic financial analysis and calculate budgets, revenue and costs
- Occasionally required to bend, crouch, climb or maneuver body to perform equipment and EOC inspections
- Knowledge of state and federal inspection agencies (TJC, CAP, DNV, and other accrediting bodies)
- Strong written, verbal and presentation communication skills
- Ability to integrate information from a variety of sources
- Excellent interpersonal and customer service skills
- Must have the ability to lead others, execute company policies, procedures and strategies; build relationships across one customer base; provide mentoring to Technicians.

# Manager-Example

- **Skills and Experience**
- Ability to think and manage strategically
- Ability to manage day-to-day and long-term site operations
- Ability to lead, motivate, and develop others
- Ability to perform financial analysis and calculate budgets, revenue, and costs
- Knowledge of Microsoft Office applications required
- Strong written, verbal, and presentational communication skills
- Rarely required to bend, crouch, climb, balance, or otherwise maneuver body to perform equipment and/or environment of care inspections
- Occasionally required to grab, grasp, or otherwise handle tools to teach and mentor technicians
- Build relationships across a diverse, and multiple customer base
- **Education and Qualifications**
- Bachelor's degree in electronics, engineering or technological field required.
- Technical certification such as A+, CBET, CRES, CLES, or CCE preferred
- Minimum 7 years' experience managing in a clinical engineering environment or direct management experience with proven business acumen and ability to develop others

# Imaging Service Engineer I-Example

- **Skills and Experience**

- Complex computer skills including the ability to interpret error codes, defragment hard-drives, replace power supplies, and interpret computer codes required
- Knowledge of Microsoft Office (Excel) and networking applications required
- Ability to integrate information from a variety of sources
- Excellent interpersonal and customer service skills
- Strong written and verbal communication skills

- **Education and Qualifications**

- Associates degree in a technical/electronics field or equivalent military experience or two years of equivalent experience.
- 6 months experience in the repair, maintenance, troubleshooting, and installation of medical imaging equipment preferred
- Frequently required to reach, pull, and/or employ fine motor skills during the installation, servicing, and maintenance of medical equipment
- Frequently required to bend, crouch, kneel, climb, balance, or otherwise maneuver body while servicing and/or inspecting medical equipment
- Frequently required to operate tools/machinery that use hand and/or foot controls (e.g. drills, saws, electronic test equipment) when servicing medical equipment
- Frequently required to lift, carry, or otherwise move up to 50 lbs while working with medical equipment
- Valid drivers license required; variable travel requirements depending on primary site that may require use of personal vehicle

# Imaging Service Engineer II- Example

- **Skills and Experience**

- Associates degree in a technical/electronics field or equivalent military training required
- Minimum 3 years' experience in the repair, maintenance, troubleshooting, and installation of medical imaging equipment
- Frequently required to reach, pull, and/or employ fine motor skills during the installation, servicing, and maintenance of medical equipment
- Frequently required to bend, crouch, kneel, climb, balance, or otherwise maneuver body while servicing and/or inspecting medical equipment
- Frequently required to operate tools/machinery that use hand and/or foot controls (e.g. drills, saws, electronic test equipment, etc.) when servicing medical equipment
- Frequently required to lift, carry, or otherwise move up to 50 lbs while working with medical equipment
- Valid driver's license required; variable travel requirements depending on primary site that may require use of personal vehicle

- **Education and Qualifications**

- Associates degree in a technical/electronics field or equivalent military experience or two years of equivalent experience.
- Complex computer skills including the ability to interpret error codes, defragment hard-drives, replace power supplies, and interpret computer codes required
- Knowledge of Microsoft Office (Excel) and networking applications required
- Ability to integrate information from a variety of sources
- Excellent interpersonal and customer service skills
- Strong written, verbal, and presentational communication skills

# Imaging Service Engineer III- Example

- **Skills and Experience**

- Associates degree in a technical/electronics field or equivalent military training required
- Bachelor's degree in engineering technology preferred
- Minimum 5 years' experience in the repair, maintenance, troubleshooting, and installation of medical imaging equipment
- Frequently required to reach, pull, and/or employ fine motor skills during the installation, servicing, and maintenance of medical equipment
- Frequently required to bend, crouch, kneel, climb, balance, or otherwise maneuver body while servicing and/or inspecting medical equipment
- Frequently required to operate tools/machinery that use hand and/or foot controls (e.g. drills, saws, electronic test equipment, etc.) when servicing medical equipment
- Frequently required to lift, carry, or otherwise move up to 50 lbs while working with medical equipment

- **Education and Qualifications**

- Associates degree in a technical/electronics field or equivalent military experience or two years of equivalent experience.
- Complex computer skills including the ability to interpret error codes, defragment hard-drives, replace power supplies, and interpret computer codes required.
- Knowledge of Microsoft Office (Excel) and networking applications required.
- Ability to integrate information from a variety of sources.
- Excellent interpersonal and customer service skills.



# Lab Service Technician I- Example

- **Skills and Experience**

- Problem solving skills to diagnose problems and develop solutions
- Strong written and verbal communication skills
- Valid drivers license required; variable travel requirements depending on primary site that may require use of personal vehicle

- **Education and Qualifications**

- Associates degree in a technical/electronics field or equivalent military experience or two years of equivalent experience.
- Minimum 6 months working with biomedical or laboratory equipment in a hospital or clinical engineering environment.
- Frequently required to reach, pull, and/or employ fine motor skills during the installation, servicing, and maintenance of laboratory equipment.
- Occasionally required to bend, crouch, kneel, climb, balance, or otherwise maneuver body while servicing and/or inspecting stationary laboratory equipment.
- Frequently required to operate tools/machinery that use hand and/or foot controls (drills, saws, electronic test equipment, etc.) when servicing laboratory equipment.
- Frequently required to lift, carry, or otherwise move up to 20 lbs while working with medical equipment.

# Lab Service Technician II- Example

- **Skills and Experience**

- Minimum 2 years' experience working in a clinical laboratory or servicing clinical laboratory equipment
- Experience in working on most low-end clinical laboratory equipment required; some experience working on high-end equipment preferred
- Problem solving skills to diagnose problems and develop solutions
- Strong written and verbal communication skills
- Valid drivers license required; variable travel requirements depending on primary site that may require use of personal vehicle

## **Education and Qualifications**

- Associates degree in a technical/electronics field or equivalent military experience or two year of equivalent experience.
- Bachelor's degree in engineering technology or a related field preferred

# Lab Service Technician III- Example

- **Skills and Experience**

- Minimum 5 years experience working in a clinical laboratory or servicing clinical laboratory equipment
- Experience in working on most low-end clinical laboratory equipment required; some experience working on high-end equipment preferred
- Problem solving skills to diagnose problems and develop solutions
- Excellent interpersonal and customer service skills
- Strong written and verbal communication skills
- Valid drivers license required; variable travel requirements depending on primary site that may require use of personal vehicle

- **Education and Qualifications**

- Associates degree in a technical/electronics field or equivalent military experience or two years of equivalent experience.

# TIPS to getting new positions approved!

- Training Options/ Gaps in coverage- Provide justification for the new position and include the current coverage barriers as well as future coverage with training.
- ROI- Return of Investment analysis report.
- Increase in inventory due to hospital buying new clinics or hospitals- based on the size of the inventory coming in, does it justify a new FTE? What is the appropriate inventory for an FTE to cover? What type of department or site is being onboarded.

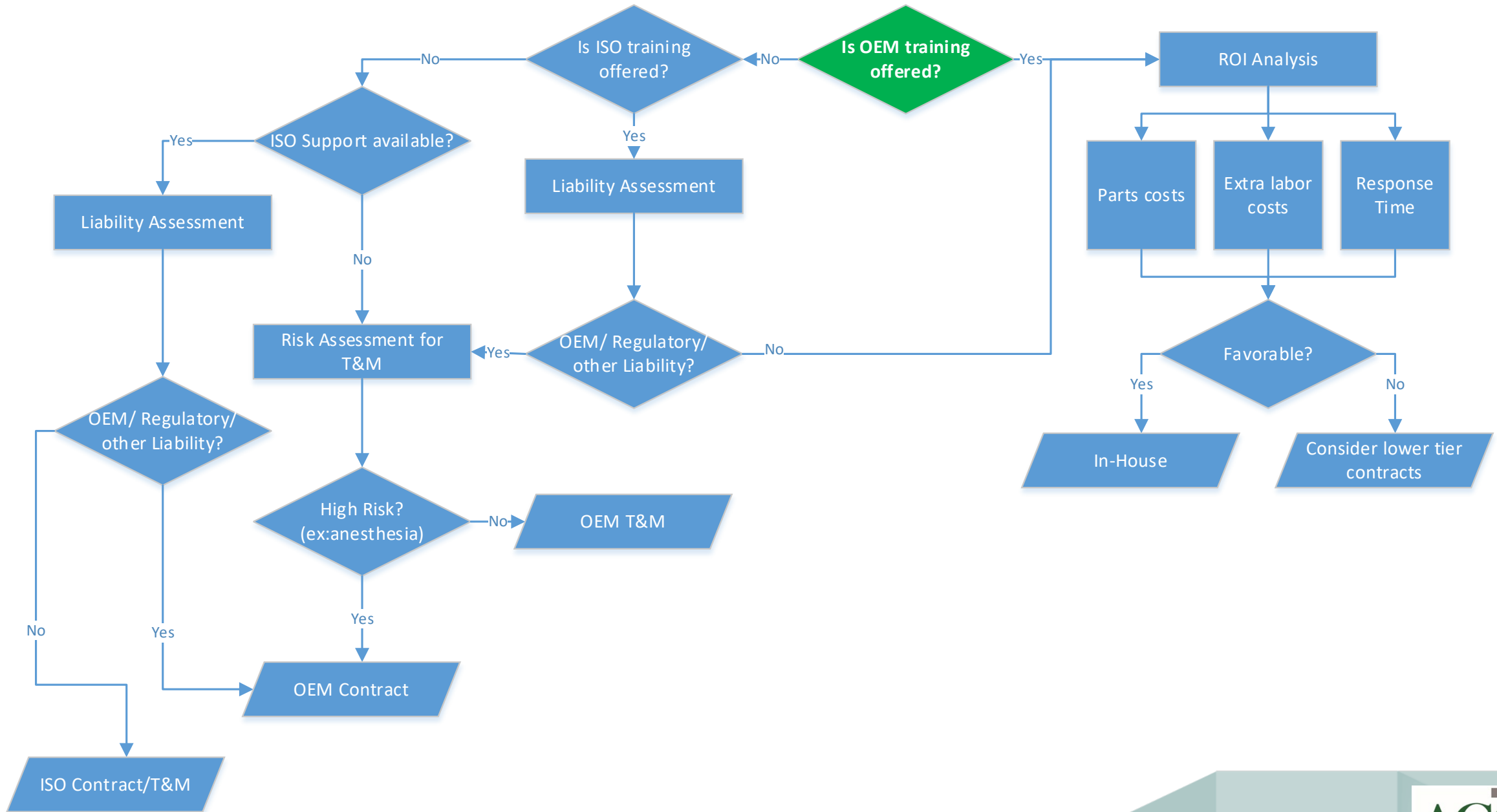
# New Technology Challenges

Talk about new technologies that are challenging to maintain or even manage, such as:

- Device Integration-will the new or current equipment require integration into a hospital network system Ie: RFID tracking, EMR data flow
- Cyber Security- Does the new or current equipment have cyber security requirements or needs. Ie: Windows 7 no longer supported, hospitals require windows 10 or higher for cyber security prevention. Patches available? Firewall?
- Specialty equipment: Robots, Imaging Guiding Systems, specialty equipment that requires specific training to service. Some high-end pieces do not even offer training because its so specific and special.

# Flow chart

Also we discussed a flow chart starting with asking the question: Is OEM training offered for these devices? And from there it goes down to inhouse service vs inhouse contract management, which in turn would require more resources based on the size and complexity of the organization.



# Questions & Discussions

Enter your  
questions  
to the Q&A  
window

# Thank You

Please complete the online evaluation form at

[https://www.surveymonkey.com/r/2023\\_session7](https://www.surveymonkey.com/r/2023_session7)

or scan the QR code

